

sage 300
(Accpac ERP)

 dws.dataworld.com.hk

 (852) 2185 1717

Total Business Management Solution (BMS) for Professional Services

Manage your resources, projects and finances on time and on budget



- Accounting & Financial
- Travel and Expense
- Timesheet Management
- Project & Job Costing
- Project Scheduling
- Resources Planning
- Employee Portal
- Powerful Workflow

Why **Sage 300(Accpac)**

Total Business Management Solution?

- **Top Global** Brand
- **End-to-end Industry-specific** Solution
- **True Integration** with Sage 300(Accpac) Accounting System
- Numerous **Success Stories**
- Sage Serves over **6,300,000** Customers Worldwide
- **Flexible, Scalable, Affordable**



Accounting and Financial Management

sage 300 (Accpac ERP)

Take the complexity out of managing your financials

Comprehensive accounting and financial management

- General Ledger (GL)
- Accounts Payable (AP)
- Accounts Receivable (AR)
- Bank Reconciliation
- Check and Form Printing
- Multicurrency Support
- Consolidated Financials across Multiple Companies

Account Description	Source Cur...	Source Debit	Source Credit	Quantity	Date
Bank account, oper...	AUD	10.00	0.00	0	19/11/2015
Bank account, VISA	AUD	19000.00	0.00	0	19/11/2015
Bank account, Am...	AUD	10.00	0.00	0	19/11/2015

Travel and Expense Management

Increase control on expense and visibility, accelerate the expense reporting and reimbursement process. Allows you to track, analyze, and control employee travel expenditures.

- **Travel Request**
(For accounting: pre-spend control; for employees: cash advances request)
- **Expense Tracking**
(Submit expense claim via web portal or mobile; Trip details and costs can be automatically imported into expense report)
- **Budget Control**
(Approvers can make right decision based on the budget information)
- **AP/ GL/ Project and Job Costing (PJC)/ Payroll Integrated**

Type*	Hotel and Accomodation
Date	2017-09-27
Project*	Accpac project for Costal Electric C...
Phase*	Go Live
Task*	
Amount	120.00
County Tax	0.00
State Tax	0.00
Notes	

Timesheet Management

Capture and control employee's time spent on task, projects in real-time. Empower you to manage time tracking for your billing and payroll easily.

- **Timesheet with Standard & Clock-in / Clock-out mode**
(Clock in/out time can be tracked accurately against the project and passed through the accounting system for billing purposes)
- **Leave and Overtime (OT) Management**
(You can define how the leave hours will be accrued and set the OT rate)
- **Payroll / Project and Job Costing (PJC) Integrated**

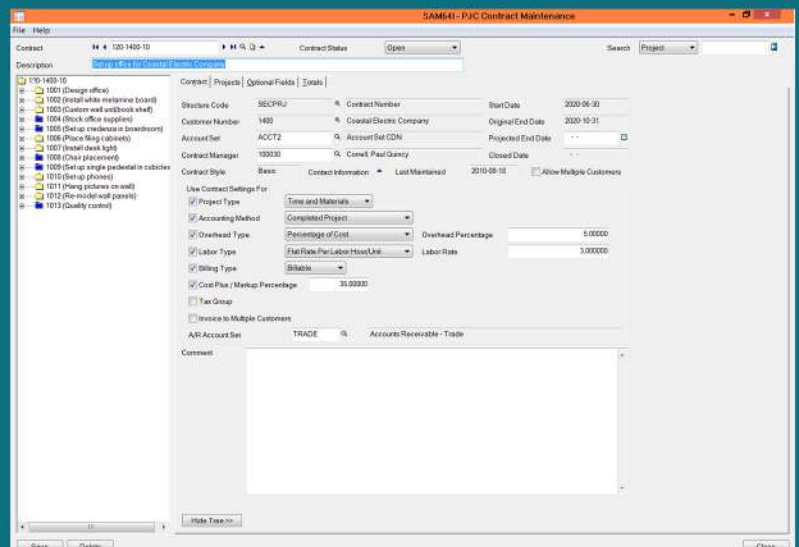
Project/Leave	Phase/WBS	Task	Category	Pay Code	Total	Sun-24	Mon-25	Tue-26	Wed-27	Thu-28	Fri-29	Sat-30
1					0.000	0	0	0	0	0	0	0
2					0.000	0	0	0	0	0	0	0
3					0.000	0	0	0	0	0	0	0
4					0.000	0	0	0	0	0	0	0
5					0.000	0	0	0	0	0	0	0
6					0.000	0	0	0	0	0	0	0
7					0.000	0	0	0	0	0	0	0
8					0.000	0	0	0	0	0	0	0
9					0.000	0	0	0	0	0	0	0
10					0.000	0	0	0	0	0	0	0
Σ					0.000	0	0	0	0	0	0	0

Project and Job Costing (PJC)

Keep projects on schedule and on budget with flexible estimating, tracking, and project billing in Sage 300(Accpac).

Effectively manage projects and track job costs

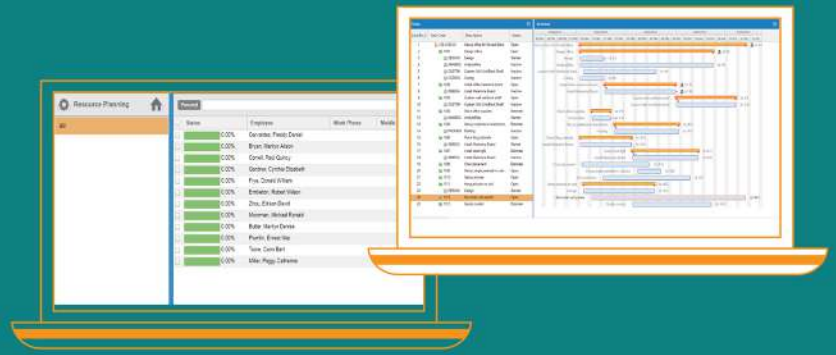
- Control project costs.
- Manage contractors and subcontractors.
- Track costs and revenue down to the finest details on every project.
- Track and monitor original projections and actuals. All costs, payables, and receivables can roll up to each area of the project. Overhead, equipment, and materials are allocated to ensure the project is on time and on budget.



Project Scheduling and Resources Planning

Gantt chart based scheduling tool helps you quickly build your project, task and milestones with ease. Gain insight into how resources are allocated.

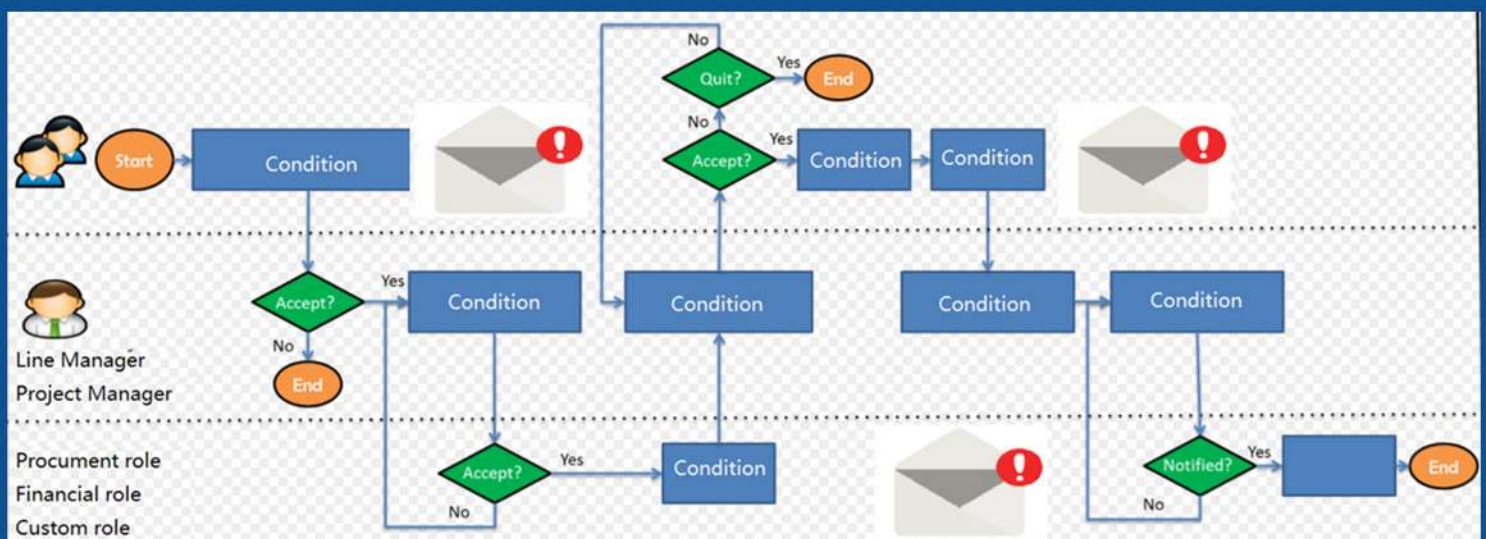
- Graphical Gantt Chart View
- Personal & Team Calendar
- Actual Labor Cost vs Estimated Labor Cost



Powerful Workflows

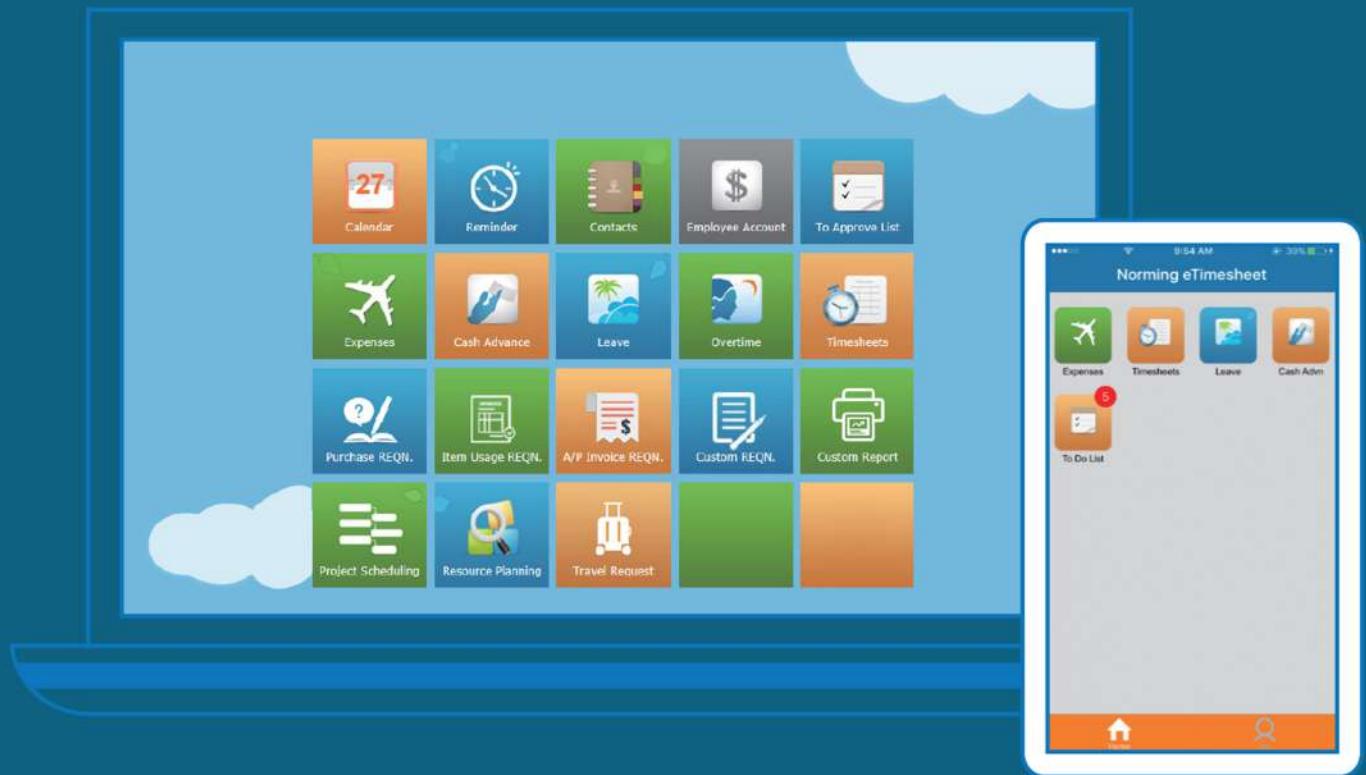
Help your company to automate the process and provide complete audit trail to trace the approval status in real time.

- **Unlimited Levels of Approval**
(e.g. line managers, project manager, a specific person or group of person etc.)
- **Standard Workflows**
(Travel Request, Expense Approvals and Reimbursements, Purchasing, Timesheet, OT & Leave Requests etc.)
- **Conditional Based Workflow**
(Based on specified criteria, such as the purchase total and expense amount.)
- **Custom Workflows based on Your Business Needs**
- **Alerts and Notifications**



Web and Mobile Based Employee Portal

Intuitive and user friendly User Interface (UI) for employee to easily claim expense or submit timesheet report and purchase requisition form via web portal. Managers can also make real-time approvals using tablets or smartphone.



End-to-End Industry-specific Solution

Data entered by employees in Expense Report, Timesheet, Purchase Requisition and etc. through Web Portal or Mobile Devices flows instantly and accurately to the accounting system which **eliminates the duplicate data entry in the accounting side**. After the documents are approved by the managers or stakeholders through the Employee Self Service portal, you will find the accounting data auto-generated in the Sage 300(Accpac), back office staff such as accountant and procurement specialist don't have to re-enter the data, and they can **simply follow up the reimbursement via A/P, bill the customer with the work hours** through Project and Job Costing or the Purchase Requisition in Purchase Order, the **project cost will also be updated** with the expense and labor hours if you have the Project and Costing integrated with Sage 300 (Accpac) for Professional Services.

22%

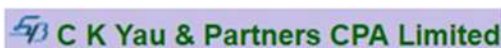
17%

14%

17%

36%

Sage 300 Partial Clients



About Sage, Sage 300(Accpac)

- Sage 300(Accpac) is World's Leading Financial and Accounting Management Solution
- Sage is World's Top 3 Provider of ERP Solution
- Sage is One of Market Leaders in Asia, Europe, UK, North America, South Africa and Brazil
- Sage Serves over 6.3 Million Customers Worldwide

Top Global ERP Brand

About Data World Solutions Limited

- Over 30 years of Experience and Expertise
- Expert in ERP, HRM, CRM, industry-specific Solutions, IT Infrastructure & Network Security
- World-class Products
Epicor, Sage 300(Accpac), Sage X3, Sage CRM, Microsoft Dynamics 365(ERP+CRM), DW-iHR
- Comprehensive and Professional Services - *Over 150 experienced consultants and IT experts*

Your Reliable ERP Solution Provider

Enquiry or Demonstration

Please fill in the enquiry form on below **link** or **QR Code**.
A Free Travel Adapter with USB Charger (value at HKD199)* will be offered to those who have made an appointment for demonstration or meeting with our consultants.

Registration Link:

<http://dws.dataworld.com.hk/enevs/2018/sage/01/dm/register.php>



**The gift will be delivered to you by our consultants during the system demonstration or meeting.*

You may also contact us at **(852) 2185 1717** or by email: leo.cheung@dataworld.com.hk



Data World Solutions Limited
Expert in Business Management Solutions

Tel: 852 2185 1717 | Fax: 3151 7828
dws.dataworld.com.hk | info.solutions@dataworld.com.hk
18/F., Manhattan Centre, 8 Kwai Cheong Road,
Kwai Chung, Hong Kong



Established in 1983 with headquarter in Hong Kong, Data World is a leading one-stop IT solutions provider specialized in end-to-end Business Management Solutions from Enterprise Resources Planning (ERP), Human Resource Management (HRM) and Customer Relationship Management (CRM) to IT Infrastructure and Network Security. We provide world-class business management solutions to enterprises from Multi-national Corporation to Small and Medium Business in the Greater China Region and other countries. With years of experience and expertise in business management solutions for many industries, our teams of consultants and IT experts provide a comprehensive range of first-class professional service and serve over 3,000 business customers in Hong Kong and China. Please visit our website at dws.dataworld.com.hk for more information.

**The logos and trademarks mentioned herein are the property of their respective owners.*

(c) 2018 Data World Solutions Ltd. All rights reserved.